

10 9 8 7 6 5 4 3 2 1

Y=895500 Y=895000 Y=894500 Y=894000 Y=893500 Y=893000 Y=892500 Y=892000

F E D C B A

X=754000 X=754500 X=755000 X=755500 X=756000



SAFETY ON THIS JOB DEPENDS ON YOU

MAP LABEL	AIDS TO NAVIGATION	PLANE COORDINATES		LATITUDE	LONGITUDE
		X	Y		
R'82	DBN-82(09/22)	754,866	889,818	26°46'52.94"	80°41'50.89"

LAKE OKEECHOBEE

ROUTE 2 (RIM CANAL)

ROUTE 2 (RIM CANAL)

HERBERT HOOVER DIKE

HERBERT HOOVER DIKE

PAHOKEE AIRPORT

MATCHLINE SHEET NO. 60

MATCHLINE SHEET NO. 62

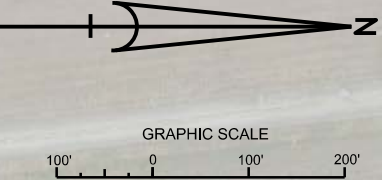
R'82

DEPARTMENT OF THE ARMY
JACKSONVILLE DISTRICT, CORPS OF ENGINEERS
JACKSONVILLE, FLORIDA

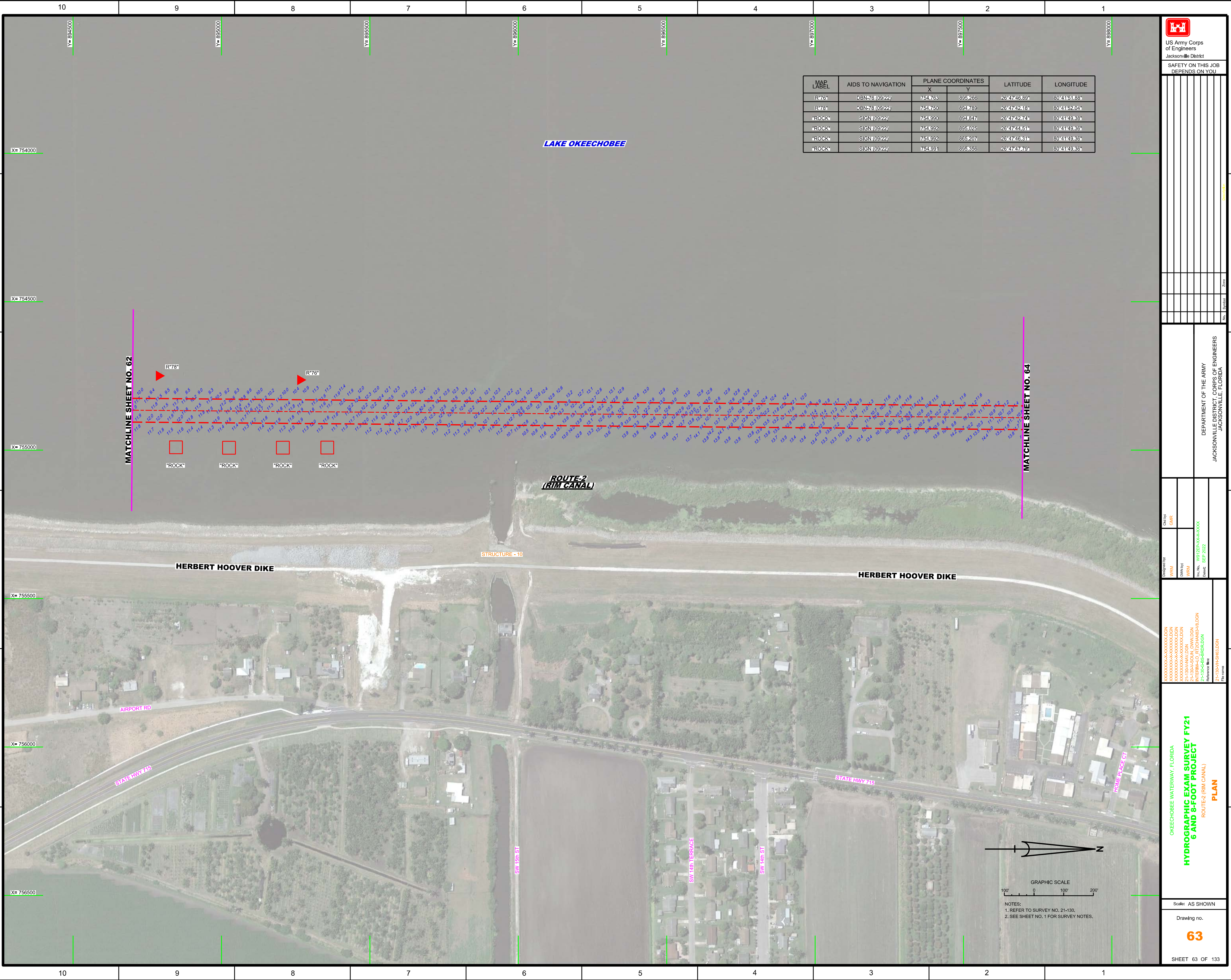
Created By: GHR
Designed By: WRM
Drawn By: WRM
File No: W912PFA-64-9-0004
Date: SEP 2022

XXXXXXXXXXXXXXXXXXXX.DGN
XXXXXXXXXXXXXXXXXXXX.DGN
XXXXXXXXXXXXXXXXXXXX.DGN
2-130-18-110-100-100.DGN
INTERNAL-LO-RITCHENS-VLDGN
2-130-6-6-S-BRIDGN
Reference files:
2-130-18-110-100-100.DGN

OKECHOBEE WATERWAY, FLORIDA
**HYDROGRAPHIC EXAM SURVEY FY21
6 AND 8-FOOT PROJECT**
ROUTE 2 (RIM CANAL)
PLAN



NOTES:
1. REFER TO SURVEY NO. 21-130,
2. SEE SHEET NO. 1 FOR SURVEY NOTES.



LAKE OKEECHOBEE

ROUTE-2
(RIM CANAL)

MATCHLINE SHEET NO. 62

MATCHLINE SHEET NO. 64

HERBERT HOOVER DIKE

HERBERT HOOVER DIKE

STRUCTURE - 10

AIRPORT RD

STATE HWY 715

STATE HWY 715

ROUTE PLACE CT

SW 15th ST

SW 14th TERRACE

SW 14th ST



NOTES:
1. REFER TO SURVEY NO. 21-130.
2. SEE SHEET NO. 1 FOR SURVEY NOTES.

MAP LABEL	AIDS TO NAVIGATION	PLANE COORDINATES		LATITUDE	LONGITUDE
		X	Y		
R*76*	DBN76 (09/22)	754.763	895.266	26°47'46.89"	80°41'51.88"
R*78*	DBN78 (09/22)	754.760	894.789	26°47'42.18"	80°41'52.04"
ROCK	SIGN (09/22)	754.990	894.847	26°47'42.74"	80°41'49.36"
ROCK	SIGN (09/22)	754.992	895.025	26°47'44.51"	80°41'49.36"
ROCK	SIGN (09/22)	754.992	895.207	26°47'46.31"	80°41'49.36"
ROCK	SIGN (09/22)	754.991	895.356	26°47'47.79"	80°41'49.36"

US Army Corps of Engineers
Jacksonville District

SAFETY ON THIS JOB DEPENDS ON YOU

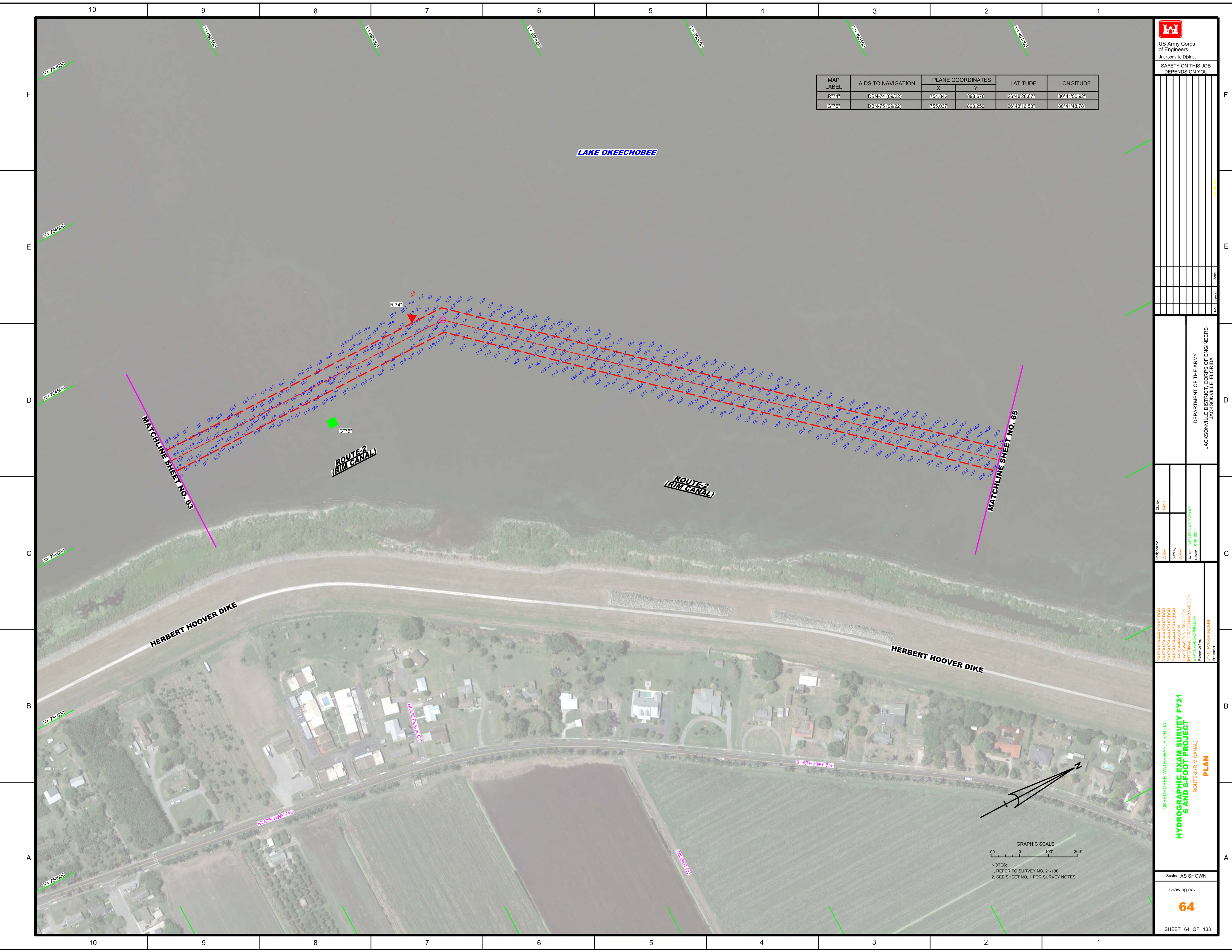
DEPARTMENT OF THE ARMY
JACKSONVILLE DISTRICT, CORPS OF ENGINEERS
JACKSONVILLE, FLORIDA

Check by: GHR
Designed by: WRM
Drawn by: WRM
File No.: W912EP-00-0000-0000
Date: SEP 2022

XXXXXXXXXXXXXXXXXXXX.DGN
XXXXXXXXXXXXXXXXXXXX.DGN
XXXXXXXXXXXXXXXXXXXX.DGN
21-130-100-100.DGN
21-130-100-100.DGN
21-130-100-100.DGN
21-130-100-100.DGN
21-130-100-100.DGN
21-130-100-100.DGN
21-130-100-100.DGN

OKEECHOBEE WATERWAY, FLORIDA
HYDROGRAPHIC EXAM SURVEY FY21
6 AND 8-FOOT PROJECT
ROUTE-2 (RIM CANAL)
PLAN

Scale: AS SHOWN
Drawing no.
63
SHEET 63 OF 133



US Army Corps of Engineers
Jacksonville District

SAFETY ON THIS JOB
DEPENDS ON YOU

MAP LABEL	AIDS TO NAVIGATION	PLANE COORDINATES		LATITUDE	LONGITUDE
		X	Y		
R74	DBN74 (09/22)	754.842	898.676	26°48'20.67"	80°41'50.92"
G75	DBN75 (09/22)	755.037	898.269	26°48'16.53"	80°41'48.78"

DEPARTMENT OF THE ARMY
JACKSONVILLE DISTRICT, CORPS OF ENGINEERS
JACKSONVILLE, FLORIDA

Drawn by: WRM
Checked by: GMR
Date: SEP 2022
Project No: 21-130-HAV-DGN
Drawing No: 64
Scale: AS SHOWN

OKEECHOBEE WATERWAY, FLORIDA
HYDROGRAPHIC EXAM SURVEY FY21
6 AND 8-FOOT PROJECT
ROUTE 2 (RIM CANAL)
PLAN

GRAPHIC SCALE
100' 0 100' 200'

NOTES:
1. REFER TO SURVEY NO. 21-130.
2. SEE SHEET NO. 1 FOR SURVEY NOTES.

HERBERT HOOVER DIKE

ROUTE 2 (RIM CANAL)

ROUTE 2 (RIM CANAL)

MATCHLINE SHEET NO. 63

MATCHLINE SHEET NO. 65

LAKE OKEECHOBEE

R74

G75

STATE HWY 716


STATE HWY 716

HOME OF OKECHI

WATER BED



MAP LABEL	AIDS TO NAVIGATION	PLANE COORDINATES		LATITUDE	LONGITUDE
		X	Y		
R*66A	DBN-66A (09/22)	759.983	903.404	26°49'07.37"	80°40'54.61"
G*67	DBN-67 (09/22)	760.845	903.877	26°49'12.04"	80°40'44.53"
R*68	DBN-68 (09/22)	758.928	902.787	26°49'00.78"	80°41'05.71"
G*69	DBN-69 (09/22)	758.488	902.331	26°48'56.78"	80°41'10.59"


 US Army Corps of Engineers
 Jacksonville District
 SAFETY ON THIS JOB
 DEPENDS ON YOU

DEPARTMENT OF THE ARMY
 JACKSONVILLE DISTRICT, CORPS OF ENGINEERS
 JACKSONVILLE, FLORIDA

Checked by: GHR
 Designed by: WRM
 Drawn by: WRM
 File No: W81255-000-0000
 Date: SEP 2022

OKEECHOBEE WATERWAY, FLORIDA
 HYDROGRAPHIC EXAM SURVEY FY21
 ROUTE-2 (RIM CANAL)
 PLAN

Scale: AS SHOWN
 Drawing no.

66
 SHEET 66 OF 133

MATCHLINE SHEET NO. 65

MATCHLINE SHEET NO. 67

ROUTE-2 (RIM CANAL)

HERBERT HOOVER DIKE

HERBERT HOOVER DIKE

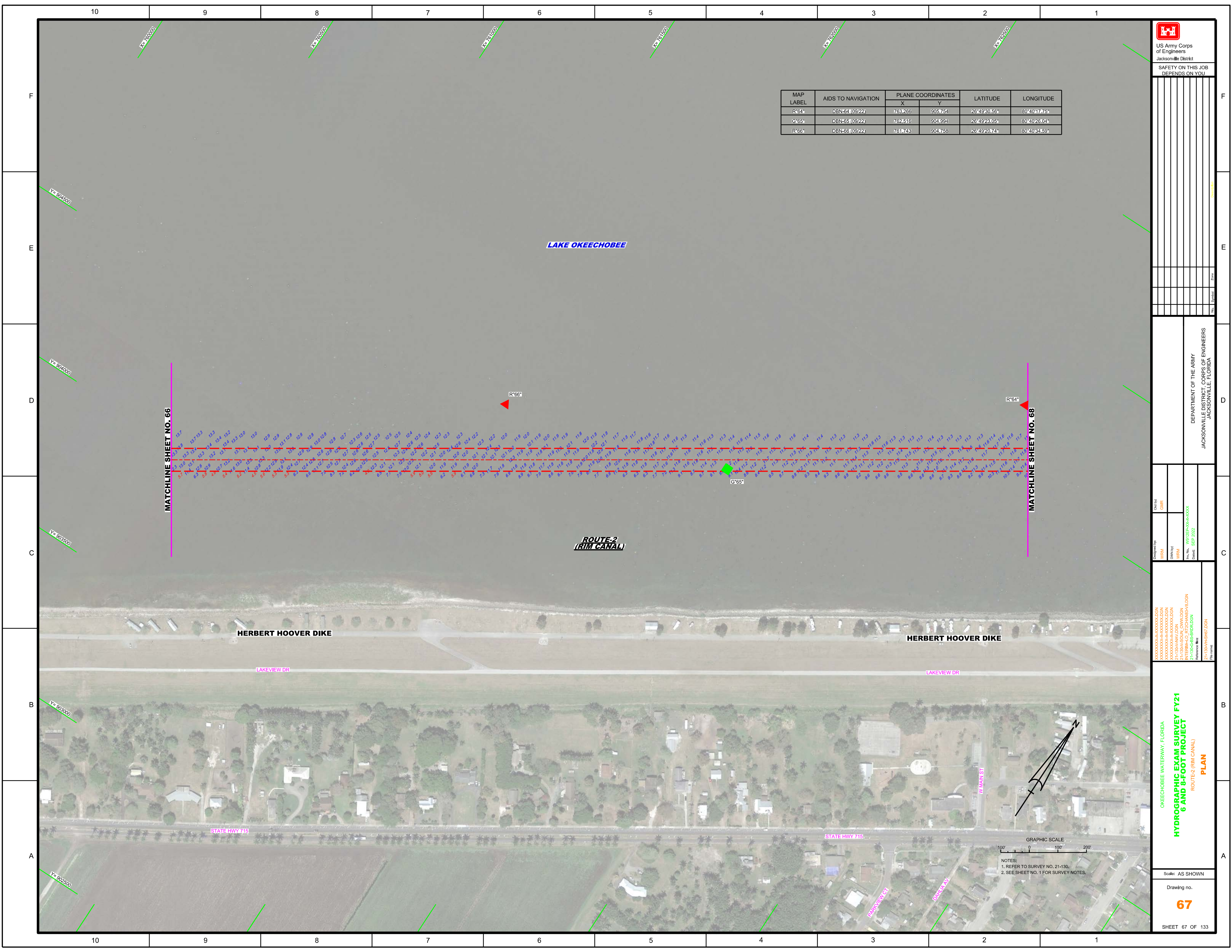
STATE HWY 715

STATE HWY 715

GOOD SHEPHERD CHURCH OF GOD



NOTES:
 1. REFER TO SURVEY NO. 21-130.
 2. SEE SHEET NO. 1 FOR SURVEY NOTES.



MAP LABEL	AIDS TO NAVIGATION	PLANE COORDINATES		LATITUDE	LONGITUDE
		X	Y		
R'64	DBN-64 (09/22)	763,266	905,754	26°49'30.56"	80°40'17.76"
G'66	DBN-66 (09/22)	762,516	904,894	26°49'23.05"	80°40'26.04"
R'66	DBN-66 (09/22)	763,743	904,768	26°49'20.74"	80°40'34.59"



 US Army Corps of Engineers

 Jacksonville District

 SAFETY ON THIS JOB

 DEPENDS ON YOU

DEPARTMENT OF THE ARMY

 JACKSONVILLE DISTRICT, CORPS OF ENGINEERS

 JACKSONVILLE, FLORIDA

Call by: GMR

 Designed by: WRM

 Drawn by: WRM

 File No.: W91255-000-0000

 Date: SEP 2022

OKEECHOBEE WATERWAY, FLORIDA

 HYDROGRAPHIC EXAM SURVEY FY21

 6 AND 8-FOOT PROJECT

 ROUTE 2 (RIM CANAL)

 PLAN

Scale: AS SHOWN

 Drawing no.

67

 SHEET 67 OF 133

GRAPHIC SCALE

 0 100' 200'

 NOTES:

 1. REFER TO SURVEY NO. 21-130.

 2. SEE SHEET NO. 1 FOR SURVEY NOTES.

MAP LABEL	AIDS TO NAVIGATION	PLANE COORDINATES		LATITUDE	LONGITUDE
		X	Y		
R'62	DBN-62 (09/22)	764,966	906,706	26°49'39.94"	80°39'58.95"

LAKE OKEECHOBEE

ROUTE-2
(RIM CANAL)

MATCHLINE SHEET NO. 67

MATCHLINE SHEET NO. 69

HERBERT HOOVER DIKE

HERBERT HOOVER DIKE

LAKEVIEW DR

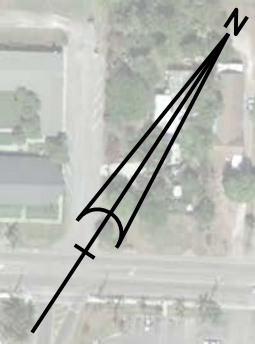
LAKEVIEW DR

W MAIN ST

E MAIN ST

STATE HWY 715

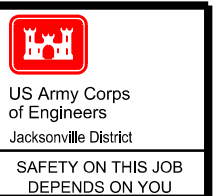
10
9
8
7
6
5
4
3
2
1



NOTES:
 1. REFER TO SURVEY NO. 21-130,
 2. SEE SHEET NO. 1 FOR SURVEY NOTES.

Checked by: GHR
 Designed by: WRM
 DWN/PZ
 WRM
 File No.: WSP25-66-0004
 Title: INTER-LO RITCHIE/AVLDGN
 Date: SEP 2022
 Reference File: 21-130-66-0004
 File Name: 21-130-66-0004.DGN

10 9 8 7 6 5 4 3 2 1



US Army Corps of Engineers
Jacksonville District

SAFETY ON THIS JOB
DEPENDS ON YOU

MAP LABEL	AIDS TO NAVIGATION	PLANE COORDINATES		LATITUDE	LONGITUDE
		X	Y		
R*56*	DBN-56 (09/22)	768.924	909.720	26°50'09.68"	80°39'15.17"
G*57*	DBN-57 (09/22)	769.183	909.348	26°50'06.00"	80°39'12.32"

No.	Symbol	Zone

LAKE OKEECHOBEE

MATCHLINE SHEET NO. 69

MATCHLINE SHEET NO. 71

ROUTE 2
(RIM CANAL)

ROUTE 2
(RIM CANAL)

HERBERT HOOVER DIKE

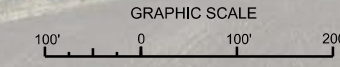
HERBERT HOOVER DIKE

LAKEVIEW DR

LAKEVIEW DR

STATE HWY 98

STATE HWY 98



NOTES:
1. REFER TO SURVEY NO. 21-130.
2. SEE SHEET NO. 1 FOR SURVEY NOTES.

Checked by: GHR
 Designed by: WRM
 Drawn by: WRM
 File No.: W12125A-1000-000
 Date: SEP 2022
 Interim-A0 RETCHANS-VLDGN
 2-130-C-S-BRIDGLDN
 Reference files:
 2-130-VHS-H70LDGN
 2-130-VHS-H70LDGN

OKEECHOBEE WATERWAY, FLORIDA
**HYDROGRAPHIC EXAM SURVEY FY21
 6 AND 8-FOOT PROJECT**
 ROUTE 2 (RIM CANAL)
PLAN

Scale: AS SHOWN

Drawing no.
70


F
E
D
C
B
A

F
E
D
C
B
A

10 9 8 7 6 5 4 3 2 1



MAP LABEL	AIDS TO NAVIGATION	PLANE COORDINATES		LATITUDE	LONGITUDE
		X	Y		
R 50	DBN-5010922	771.864	915.275	26°51'04.62"	80°38'42.55"


 US Army Corps of Engineers
 Jacksonville District
 SAFETY ON THIS JOB
 DEPENDS ON YOU

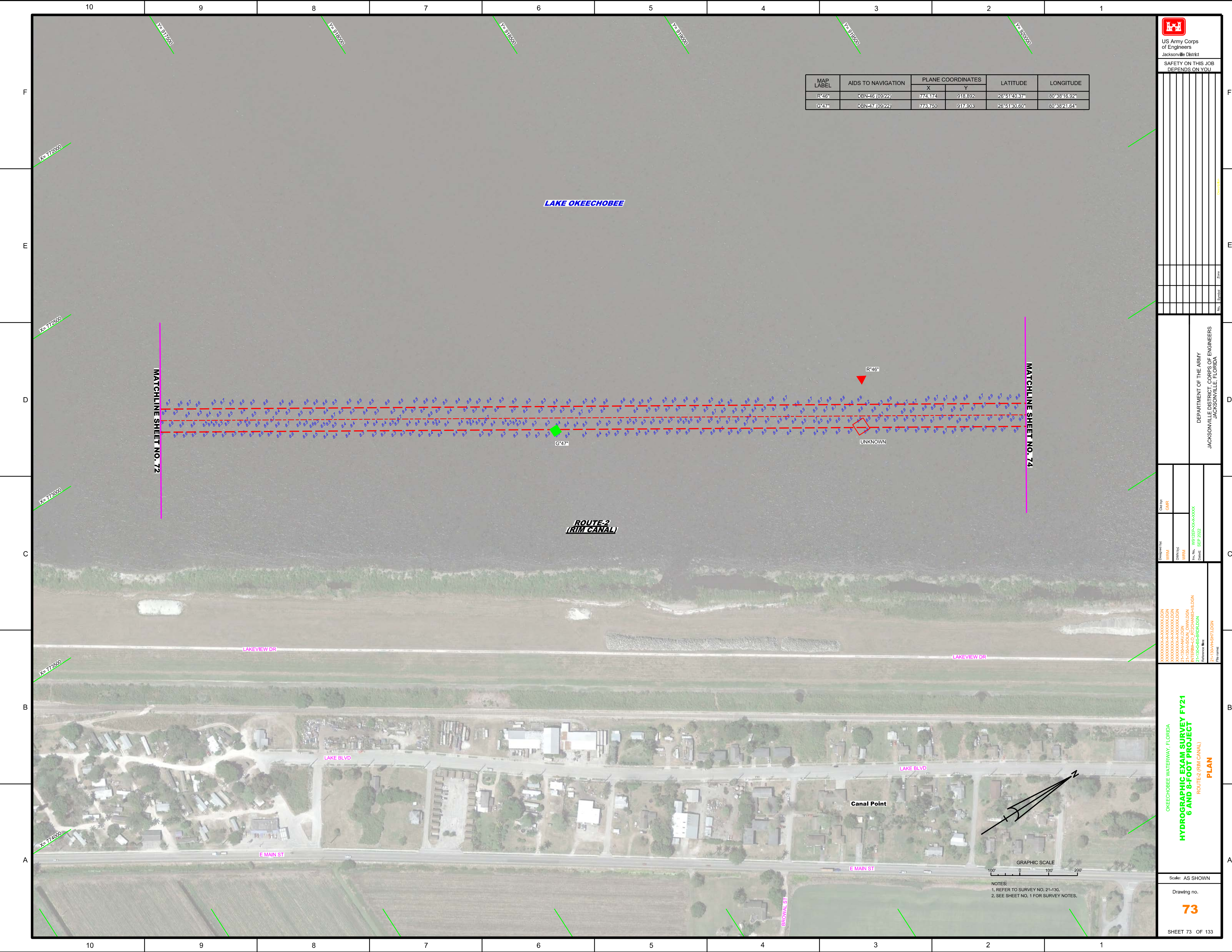
DEPARTMENT OF THE ARMY
 JACKSONVILLE DISTRICT, CORPS OF ENGINEERS
 JACKSONVILLE, FLORIDA

Call by: GMR
 Designed by: WRM
 Drawn by: WRM
 File No.: W1225-00-00-000
 Date: SEP 2022

OKEECHOBEE WATERWAY, FLORIDA
HYDROGRAPHIC EXAM SURVEY FY21
 ROUTE 2 (RIM CANAL)
PLAN

Scale: AS SHOWN
 Drawing no.
72
 SHEET 72 OF 133

GRAPHIC SCALE
 0 100 200
 NOTES:
 1. REFER TO SURVEY NO. 21-130.
 2. SEE SHEET NO. 1 FOR SURVEY NOTES.



MAP LABEL	AIDS TO NAVIGATION	PLANE COORDINATES		LATITUDE	LONGITUDE
		X	Y		
R*46*	DBN-46 (09/22)	774,174	918,892	26°51'40.37"	80°38'16.92"
G*47*	DBN-47 (09/22)	773,750	917,903	26°51'30.50"	80°38'21.64"

US Army Corps of Engineers
 Jacksonville District
 SAFETY ON THIS JOB DEPENDS ON YOU

DEPARTMENT OF THE ARMY
 JACKSONVILLE DISTRICT, CORPS OF ENGINEERS
 JACKSONVILLE, FLORIDA

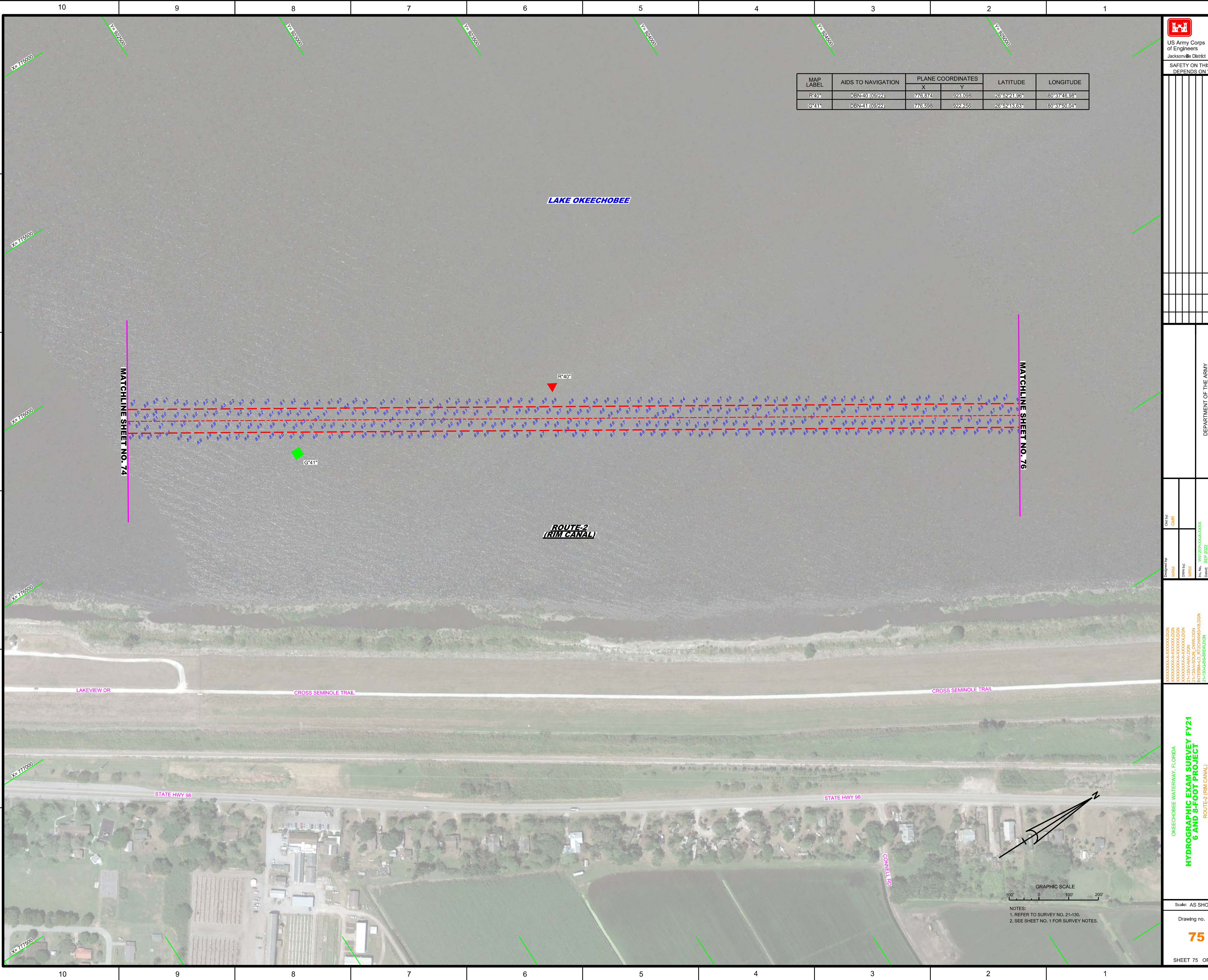
Checked by: GMR
 Designed by: WRM
 Drawn by: WRM
 File No: WR2208-06-09-0004
 Date: SEP 2022

XXXXXXXXXXXXXXXXXXXX.DGN
 XXXXXXXXXXXXXXXXXXXX.DGN
 XXXXXXXXXXXXXXXXXXXX.DGN
 21-130-00-00-0000.DGN
 21-130-00-00-0000.DGN
 21-130-00-00-0000.DGN
 21-130-00-00-0000.DGN
 21-130-00-00-0000.DGN
 21-130-00-00-0000.DGN


OKEECHOBEE WATERWAY, FLORIDA
HYDROGRAPHIC EXAM SURVEY FY21
6 AND 8-FOOT PROJECT
 ROUTE 2 (RIM CANAL)
PLAN

Scale: AS SHOWN
 Drawing no.
73
 SHEET 73 OF 133

GRAPHIC SCALE
 100' 0 100' 200'
 NOTES:
 1. REFER TO SURVEY NO. 21-130.
 2. SEE SHEET NO. 1 FOR SURVEY NOTES.



MAP LABEL	AIDS TO NAVIGATION	PLANE COORDINATES		LATITUDE	LONGITUDE
		X	Y		
R40*	DBN-40 (09/22)	776.874	923.098	26°52'21.96"	80°37'46.98"
G41*	DBN-41 (09/22)	776.598	922.256	26°52'43.63"	80°37'50.04"



US Army Corps of Engineers
Jacksonville District
SAFETY ON THIS JOB DEPENDS ON YOU

DEPARTMENT OF THE ARMY JACKSONVILLE DISTRICT, CORPS OF ENGINEERS JACKSONVILLE, FLORIDA	PLAN OKECHOBEE WATERWAY, FLORIDA HYDROGRAPHIC EXAM SURVEY FY21 ROUTE-2 (RIM CANAL) 6 AND 8-FOOT PROJECT
Drawn by: WRM DWN by: WRM Checked by: WRM Date: SEP 2022	File name: 21-130V-HS-H75.DGN Reference files: 21-130V-HS-87.DGN, 21-130V-HS-88.DGN, 21-130V-HS-89.DGN, 21-130V-HS-90.DGN, 21-130V-HS-91.DGN, 21-130V-HS-92.DGN, 21-130V-HS-93.DGN, 21-130V-HS-94.DGN, 21-130V-HS-95.DGN, 21-130V-HS-96.DGN, 21-130V-HS-97.DGN, 21-130V-HS-98.DGN, 21-130V-HS-99.DGN, 21-130V-HS-100.DGN
Scale: AS SHOWN Drawing no. 75 SHEET 75 OF 133	NOTES: 1. REFER TO SURVEY NO. 21-130. 2. SEE SHEET NO. 1 FOR SURVEY NOTES.

MAP LABEL	AIDS TO NAVIGATION	PLANE COORDINATES		LATITUDE	LONGITUDE
		X	Y		
R-36	DBN-36 (05/21)	779,140	926,649	26°52'57.06"	80°37'21.84"
G-37	DBN-37 (05/21)	778,696	925,488	26°52'45.57"	80°37'26.77"

LAKE OKEECHOBEE

MATCHLINE SHEET NO. 75

MATCHLINE SHEET NO. 77

G-37

R-36

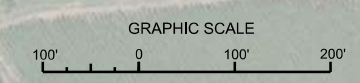
ROUTE-2
(RIM CANAL)

CROSS SEMINOLE TRAIL

CROSS SEMINOLE TRAIL

STATE HWY 98

STATE HWY 98



NOTES:
1. REFER TO SURVEY NO. 21-130.
2. SEE SHEET NO. 1 FOR SURVEY NOTES.

DEPARTMENT OF THE ARMY
JACKSONVILLE DISTRICT, CORPS OF ENGINEERS
JACKSONVILLE, FLORIDA

Designed by: WRM
Checked by: GMR
Date: 09/20/2022

OKEECHOBEE WATERWAY, FLORIDA
**HYDROGRAPHIC EXAM SURVEY FY21
6 AND 8-FOOT PROJECT**
ROUTE-2 (RIM CANAL)
PLAN

Scale: AS SHOWN
Drawing no.
76
SHEET 76 OF 133

MAP LABEL	AIDS TO NAVIGATION	PLANE COORDINATES		LATITUDE	LONGITUDE
		X	Y		
R*30*	DBN-30 (05/21)	781,436	931,945	26°53'49.43"	80°36'56.30"
G*31*	LE-31 (05/21)	781,508	931,121	26°53'41.27"	80°36'55.53"
R*32*	DBN-32 (05/21)	780,953	930,019	26°53'30.38"	80°37'01.59"

LAKE OKEECHOBEE

MATCHLINE SHEET NO. 77

MATCHLINE SHEET NO. 79

ROUTE-2
(RIM CANAL)

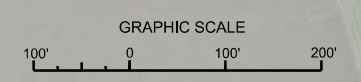
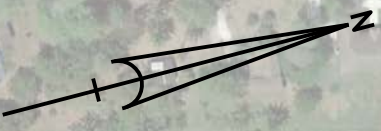
ROUTE-2
(RIM CANAL)

CROSS SEMINOLE TRAIL

CROSS SEMINOLE TRAIL

State Hwy 98

State Hwy 98



NOTES:
1. REFER TO SURVEY NO. 21-130.
2. SEE SHEET NO. 1 FOR SURVEY NOTES.

DEPARTMENT OF THE ARMY
JACKSONVILLE DISTRICT, CORPS OF ENGINEERS
JACKSONVILLE, FLORIDA

Checked by: GMR
Designed by: WRM
Drawn by: WRM
File No: W8125P-A-00000000
Date: SEP 2022

OKEECHOBEE WATERWAY, FLORIDA
HYDROGRAPHIC EXAM SURVEY FY21
6 AND 8-FOOT PROJECT
ROUTE-2 (RIM CANAL)
PLAN

Scale: AS SHOWN
Drawing no.
78
SHEET 78 OF 133

